



**CRANBOURNE EAST
SECONDARY COLLEGE**

*"Giving every student, every opportunity to exceed
their potential by providing a high quality pathway
to success."*

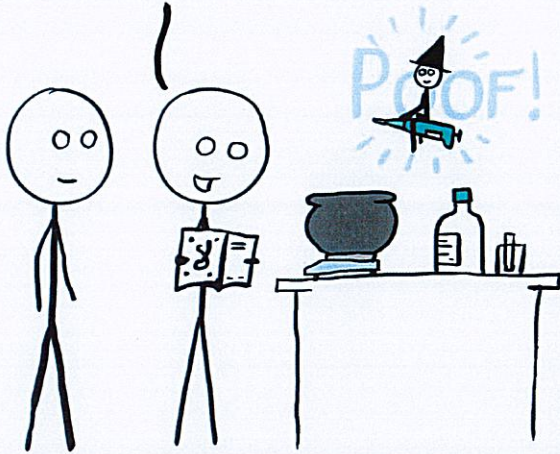
Science Technician

(sahy-uh-ns tek-nish-uh-n)

NOUN

A person with the skills of a hundred professions yet the salary of none of them!

OH LAB WITCH PLEASE COME AND HELP MY EXPERIMENT RUN



ADD A DROP OF BUFFER MADE FROM OAT MILK, MUSTARD SEEDS AND THE EYELASH OF A PROFESSOR



AND THAT WILL WORK?

NO, BUT IT'S GOT JUST AS MUCH CHANCE OF WORKING AS THE GARBAGE YOU'RE TRYING



WAIT, THIS SAYS HOW TO SUMMON A SARCASTIC WITCH
YOU NEEDED THE CHOCOLATE OFFERING TO GET A HELPFUL ONE



BENCH SPRAY

RECIPE

2L Water

50ml Handy Andy

25ml Eucalyptus Oil

25ml Peppermint Essence

*****Purchase from Coles or Woolworths**

***Use an empty 2L Distilled water bottle

Label – Bench Spray

ADD above ingredients and shake

As the oil settles to the top
shake each time you want to transfer to a spray
bottle.

- * Use for benches after dissections
- * Cleaning the sinks
- * Removes fat from benches and metals
- * Cleans white boards without damaging the surface. (Use a towel)

CLEANING

Cleaning dissection equipment –

place in a shallow tray.
ADD 1 tbsp citric acid
cover with boiling water
wait till the water goes cold
dry and put away

Cleaning carbonised glassware –

Loofa glove

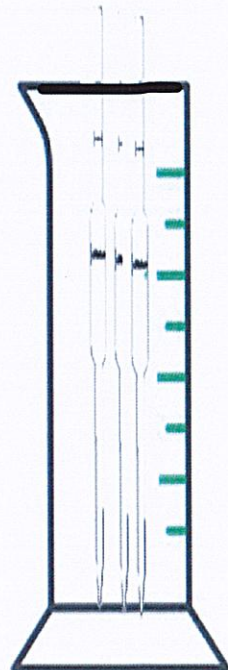
Available from \$2 shop.
Put on your hand and lightly scrub the
base of a beaker or test tube that is blackened



Cleaning pipettes –

If you don't have a pipette washer

Stand pipettes in a 1L tall measuring cylinder
(about 10cm diameter)
Fill with water to the top,
Put your hand over the top and invert to drain the
water
repeat at least 3 times.
Stand pipettes upside down to drain and dry on
a spike rack



DISSECTIONS

- Tray for each dissection instrument.
Number how many in the tray
- Hardly use scalpels as scissors are safer and easier to use for most pracs.
- Chopping board : flexible mat (cut in half)
- Stand up container with Dettol to soak instruments coming back from class.
- Hand wash bottles are colour coded for each trolley along with a spray bottles for cleanup.
- TWO BOTTLES OF EACH
- 15 classes, number the RAS request as you go, then you can keep track of how many you have done.
- Gloves from Coles \$8 per 100 box
- Aprons – Livingstone \$20.85 per 100



SOAKER

Removes oil fat or food from test tubes and glassware



Sprinkle powder into glassware

ADD boiling water and top up with hot tap water if you need more.

separating funnels •

burette taps

test tubes

stained glassware – beakers – rust stains

Soak overnight then rinse and wash

STORAGE



Photocopy boxes
Plenty of them,
there are new ones everyday
They come in two sizes.

FREE !!

Some I cut down to fit the equipment and/or space.

Décor cupcake box - \$5 Coles (on special)



Use these for storage of class set beakers
12 x 250ml beaker
6 X 500ml beaker
20 x 100ml beakers

Easy stock control

Easy to put a set on a trolley

Don't have to lift glassware individually to move

** Balances (they stack neatly in the cupboard)



Lab Coat collars are coloured coded for each size.

ie: blue = Large

Students try on at the start of the year and make note of the colour that fits, then they don't have to check tags for size.

Poly cotton bias binding from spotlight straight stitching across the back of the collar.





CHEM. STORE

BLUE STORAGE TRAYS

\$5.50 ea

OnlinePlastics

Unit 12 / 7 Vesper Drive

Narre Warren VIC 3805

Australia

Call us: 03 9704 8822

Email us:

sales@on-lineplastics.com.au

/ Spare Parts Tray / 100 x 100 x 300mm Spare parts tray Fischer Plastics



100 X 100 X 300MM SPARE PARTS TRAY FISCHER PLASTICS

\$5.50

Tax included

Product code: 1H-012

Includes: 2 Dividers

Dimensions: W100xH100xD300mm

Material: Polypropylene

Brand: Fischer Plastics

Colour: Blue

Blue

Quantity

1

ADD TO CART



Stuhl bottles 125ml.

Dropper tops or screw caps

Blue tray holds 12 bottles OR
8 bottles and a 500l Schott bottle
For stock





*Built in storage under a window

*Loose alphabetical sorting

*Heavy items at the bottom

*Label both Ends



Practicals ready for collection that don't require a trolley



Spirit burners – for biol lab.

Second set assorted alcohols for chemistry prac

Stored in flammable cabinet.



Red lid containers
Purchase from Coles
\$6 x 6 containers

LAB NOTES : *I make these as a reference to what has been done, and what equipment I need to provide or buy to run the unit. It also has a list of DVD's that are on the drive to support the learning. I don't have to remember everything year to year.*

Senses – Lab Notes

TOUCH – Skin Structure – Nerve Structure

Nerve endings – Nails on a ruler

HOT & COLD – 3 buckets with ice water, tap water, warm (65o) water

Fake Arm – arm in a lab coat with rubber glove stuffed and box or screen.

Combs – Kathleen

Copper Pipe, cardboard tube, plastic pipe

HEARING – Audacity, McGurk, Ear Models cochlea and ??

SIGHT

Eye Dissection

Ishihara Cards

Optical Illusions

SMELL

*Small vials (14) with mostly essential oils

*3 bottles – Apple juice, Pear juice, Potato Juice (In freezer frozen for the next class)

Tasting Cups

Sunburst Lollies – Set up in vials for tasting.

Air Freshener

Skull from skeleton

Sagittal plane rat – can see sinus

TASTE

PTC paper

Tongue Mapping – Sweet, Salt, Sour, Bitter – sugar, salt,
lemon juice, tonic water

Coloured water – green, red, yellow – ALL Strawberry

Tasting Cups – Sweet(sugar) Sour(lemon juice)

Bitter(tonic water) Salt (salt)

Toothpaste & Orange Juice (TicTacs)

Blue food dye to colour for super tasters & Tongue
shields

DVD List

BBC Series – Taste, hearing, sight, smell (20)

Scope – smell (23)

Sight (43)

Sleek Geeks

RANDOM INFORMATION - ICE BATH

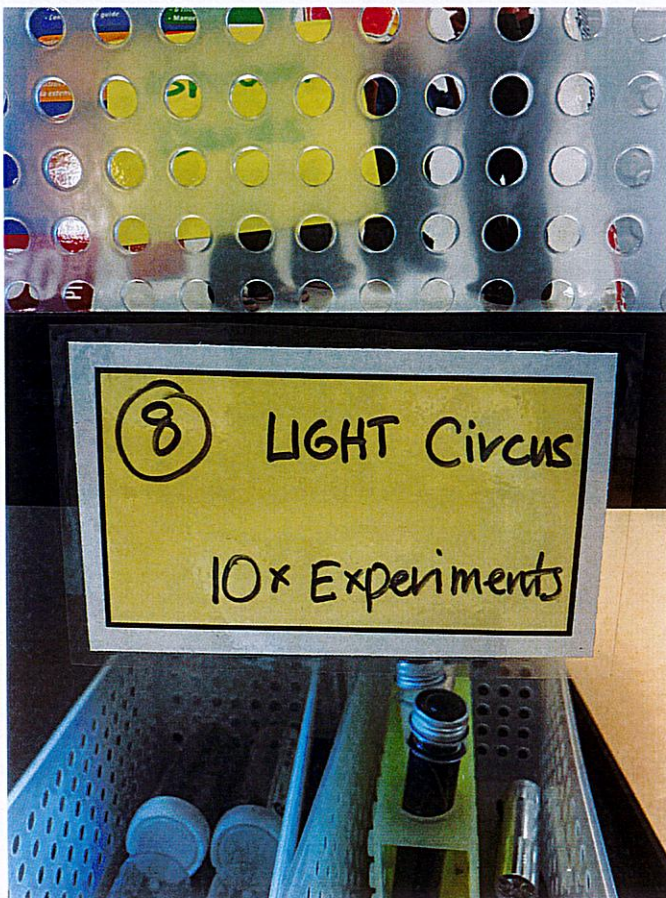
We use supa dupa's

Put in the water bath to reduce the temp. for an ice bath
Works better than ice blocks they don't melt and increase
the volume of water.

When you are finished, take them out dry, put back in the
freezer for next time. Mine are 8 years old.

Make the tray – **DO NOT EAT !!**

Trolley Labels



Making Iodine soln.

Weigh up iodine to concentration required.

ADD KI – potassium iodide to 150ml water.

Add iodine – it will dissolve much faster.

When dissolved, make up to volume with water.

Making Starch soln.

Weigh up starch to concentration required.

ADD 50ml cold water and stir to distribute starch.

Make up to volume with boiling water from the kettle.

Stir continually. – readymade, just cool to pour into bottles

Empty bottle when pracs. Are finished, empty, rinse and store upside down without lids ready for the next time you need them. Keep labelled.

Do this for solutions of enzymes, empty and keep the labelled bottles.

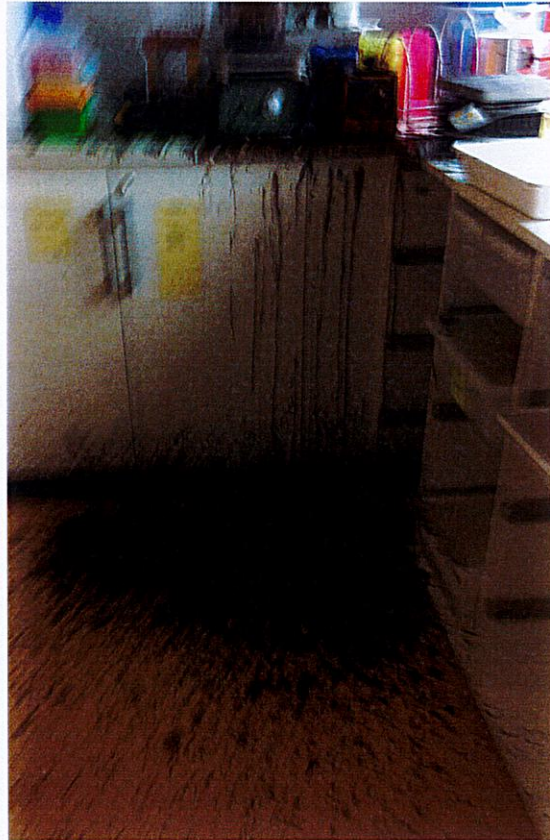
Making vegetable soln's. - Indicators

Red cabbage – shred and store in the freezer ready for kids to make acid/base indicator.

Onion skin – keep brown and red onion skins to be used to make acid/base indicator.

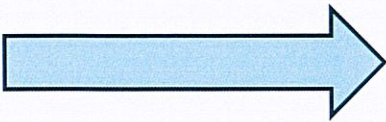
Strawberries (for DNA) – buy strawberries when they are cheap. Bag and store in the freezer ready to extract DNA. The frozen water expands the cells to give more DNA. Can do the same with banana, kiwi fruit or any other fruit.

When it all goes wrong



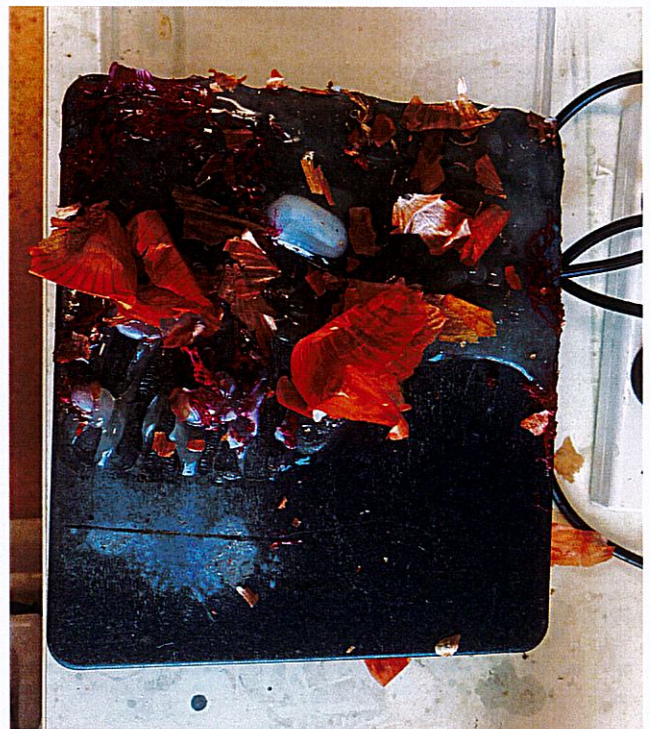


Hours of scrubbing and cleaning





When it all goes wrong



NOTE : Don't cook onions in a plastic tub on a hot plate. The onions burn, the plastic melts and everything sticks to the hot plate. Brain fade moment when I thought the hot plate was off !!



Merry
Christmas to
all the
TECHS @
Lab.CON